

**R450-100 Hershey®
Reese's® Peanut Butter Cups**



Issue Date:	3/16/2017	Revision:	A
-------------	-----------	-----------	---

PRODUCT DESCRIPTION

Varying sized pieces of chopped Reese's Peanut Butter Cups candy.

PHYSICAL ATTRIBUTES								
Appearance:	Chopped Reese's Peanut Butter Cups							
Color:	Typical Reese's Peanut Butter Cups, brown with light brown center							
Flavor:	Chocolate with peanut butter							
Texture:	Chopped peanut butter pieces coated in milk chocolate.							
Pack Size:	2x5lb poly bags per corrugated case.							
Case Dimensions:								
L[depth]xWxH in.	7	14.5	5.9	Case Cube(ft ³):	0.3466	Pallet Conf. (TI / HI)	15	10

INGREDIENTS

MILK CHOCOLATE [SUGAR, COCOA BUTTER, CHOCOLATE, NONFAT MILK, MILK FAT, LACTOSE, LECITHIN (SOY), PGPR, EMULSIFIER], PEANUTS, SUGAR, DEXTROSE, SALT, TBHQ AND CITRIC ACID, TO MAINTAIN FRESHNESS.

ALLERGENS: CONTAINS: MILK, SOY AND PEANUT

Cornstarch is used as a processing aid.

NUTRITIONAL INFORMATION	
NUTRIENT	Per 100g
CALORIES	508.00
CALORIES FROM FAT	246.46
TOTAL FAT (g)	29.24
SATURATED FAT (g)	10.57
TRANSFAT (g)	0.13
CHOLESTROL (mg)	7.37
SODIUM (mg)	351.48
TOTAL CARBOHYDRATE (g)	57.02
DIETARY FIBER (g)	3.74
SUGARS (g)	51.59
PROTEIN (g)	10.87
VITAMIN A (IU)	26.74
VITAMIN C (mg)	0.31
CALCIUM (mg)	92.29
IRON (mg)	2.89



Nutrition Facts

Serving Size 2 Tbsp. (19.53g)
Servings Per Container about 227

Amount Per Serving	
Calories 100	Calories from Fat 50
% Daily Value*	
Total Fat 6g	9%
Saturated Fat 2g	10%
Trans Fat 0g	
Cholesterol 0mg	0%
Sodium 70mg	3%
Total Carbohydrate 11g	4%
Dietary Fiber <1g	4%
Sugars 10g	
Protein 2g	
Vitamin A 0%	Vitamin C 0%
Calcium 0%	Iron 2%

* Percent Daily Values are based on a 2,000 calorie diet. Your daily values may be higher or lower depending on your calorie needs:

	Calories:	2,000	2,500
Total Fat	Less than	65g	80g
Saturated Fat	Less than	20g	25g
Cholesterol	Less than	300mg	300mg
Sodium	Less than	2,400mg	2,400mg
Total Carbohydrate		300g	375g
Dietary Fiber		25g	30g

Brand Name:	TR Toppers	Net Weight: (Lbs.)	10.00
		Net Weight: (Kg.)	4.54
Case GTIN	0 06 51844 10003 8	Gross Weight: (Lbs.)	11.00
Kosher	Star-D	Gross Weight: (Kg.)	4.99
Metal Detection	1.5mm Ferrous	1.8mm Non-Ferrous	2.0mm SS316
Country of Origin	Mexico	Density (lbs/gal)	5.82

MICROBIOLOGICAL ATTRIBUTES	
Attributes	Limits
Total Aerobic Plate Count (cfu/g)	<25,000
E. coli (/g)	Negative
Coliforms (cfu/g)	<10
Yeast and Mold (cfu/g)	<100
Salmonella (/375g)	Negative

STORAGE CONDITIONS	
Recommended Condition:	Best kept frozen ($\leq 10^{\circ}\text{F}$).
Alternate Condition:	May be refrigerated ($\leq 40^{\circ}\text{F}$).

SHIPPING CONDITIONS	
Recommended Condition:	Best kept frozen ($\leq 10^{\circ}\text{F}$).
Alternate Condition:	Temper in refrigeration temperature. Temper for 36 to 48 hours. Do Not temper in ambient condition. Do Not store at ambient conditions. Seal container after opening. Refrigerate promptly after opening.

SHELF LIFE	
Recommended Shelf Life:	10 months at recommended storage conditions.
Alternate Shelf Life:	Calculate 1/3 of remaining shelf life when opened and stored at refrigeration temperature.

ALLERGEN / SENSATIZER TABLE			
COMPONENT	PRESENT IN PRODUCT	PRESENT IN PRODUCTS MANUFACTURED ON THE SAME LINE	PRESENT IN THE SAME MANUFACTURING PLANT
PEANUTS AND DERIVATIVES	YES	YES	YES
TREE NUTS AND DERIVATIVES	NO	YES	YES
EGG AND DERIVATIVES	NO	YES	YES
MILK AND DERIVATIVES	YES	YES	YES
SOY AND DERIVATIVES	YES	YES	YES
WHEAT	NO	YES	YES
FISH (SPECIFY SPECIES)	NO	NO	NO
CRUSTACEAN SHELLFISH (SPECIFY)	NO	NO	NO
SULFITES > 10 ppm	NO	NO	NO
MUSTARD	NO	NO	NO
SESAME	NO	NO	NO
GLUTEN	NO		
PARTIALLY HYDROGENATED OILS	NO		
ARTIFICIAL FLAVOR SOURCE	NONE		
FD&C ARTIFICIAL COLORS	NONE		

GRANULATION										
Sieve Size	3/4"	1/2"	3/4"	#8	#20	Pan				
Range (%)	<1	10 - 30	30 - 50	19 - 28	5 - 15	<7				

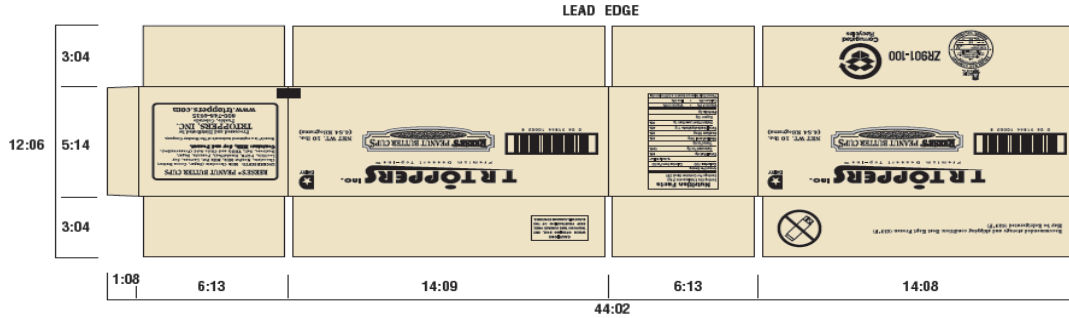
CODE FORMAT
Case Code - Left Side: Julian Date, Time, R450-100, PCO, BEST BY MM YYYY
Case Code - Right Side: Julian Date, Time, R450-100, PCO, BEST BY MM YYYY
Pallet Markings: JJY, Pallet #, Product Code
EXAMPLE: 25811 15:32 R450-100
JJJ = Production Julian Date 258 = September 15; Y = Last Digit of Year 1 = 2011; L = Line (Numeric) 1 = Line 1; Time: HH:MM 15:32 = 3:32 p.m.
Product Code = (e.g. R450-100)

PRINT DIE #: T-162

DELINE BOX CO. PRINT SPECIFICATION

DATE: 08/09/16 DOCKET #: 117526 FILE #: 72259 PRINT DIRECTION: [] 95.84(%) RSC (X) DIE CUT ()
 CUST. NAME: TR TOPPERS LPI: PLATE TYPE: .155
 JOB DESCRIPTION: Cups Reese's ZR901-100 NUMBER ON: 1 ACROSS: 1 AROUND: 1
 CAD #: TRT02363L CUSTOMER #: 4914 TEST: 200 36MESW FLUTE: C
 BAR CODE #: LWR: BOX SIZE: 14.06 X 6.10 X 5.08 SHEET SIZE: 12.06 X 44.08
 PRINT DIE #: T-162 STEEL RULE DIE #: CYL. REPEAT: 41" PRESS: EMBA

COLOR	COLOR ROTATION:			
	NUMBER	FORMULA	DENSITY	ANLQX
1. 90 BLACK				
2.				
3.				
4.				
5.				



790 Umatilla St. • Denver, CO 80204
 P: 303-595-3663 • F: 720-384-0633
 TF: 1-800-440-5188
 www.pepperlines.com

REORDER NUMBER: 117526
 THIS MASTER SHOULD NOT BE FOLLOWED
 FOR EXACT SIZE OR COLOR.

DATE 08/09/16



CAUTION!
 WHEN OPENING BOX, CUT THROUGH TAPE SURFACE ONLY. DEEP PENETRATION OF THE BLADE WILL DAMAGE CONTENTS.

Recommended storage and shipping condition: Best Kept Frozen (≤10°F)
 May be Refrigerated (≤40°F)



REESE'S® PEANUT BUTTER CUPS

INGREDIENTS: Milk Chocolate (Sugar, Cocoa Butter; Chocolate, NonFat Milk, Milk Fat, Lactose, Soy Lecithin, PGPR, Emulsifier), Peanuts, Sugar, Dextrose, Salt, TBHQ and Citric Acid (Preservative).
Contains: Milk, Soy and Peanut.

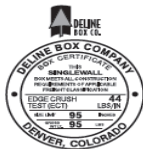
Reese's® is a registered trademark of The Hershey Company.

Processed and Distributed by
TR TOPPERS, INC.
 Pueblo, Colorado
 800-748-4635
 www.trtoppers.com

TR TOPPERS inc.
 Premium Dessert Top-Ins™



NET WT. 10 lbs.
 (4.54 Kilograms)



ZR901-100



Nutrition Facts

Serving Size 2 tablespoons (19g)
 Servings Per Container About 239

Amount Per Serving	% Daily Value*
Calories 100	Calories from Fat 50
Total Fat 6g	9%
Saturated Fat 2g	10%
Trans Fat 0g	
Cholesterol 0mg	0%
Sodium 65mg	3%
Total Carbohydrate 11g	4%
Dietary Fiber Less than 1g	3%
Sugars 10g	
Protein 2g	
Vitamin A 0%	Vitamin C 0%
Calcium 2%	Iron 2%

*Percent Daily Values are based on a 2,000 calorie diet.